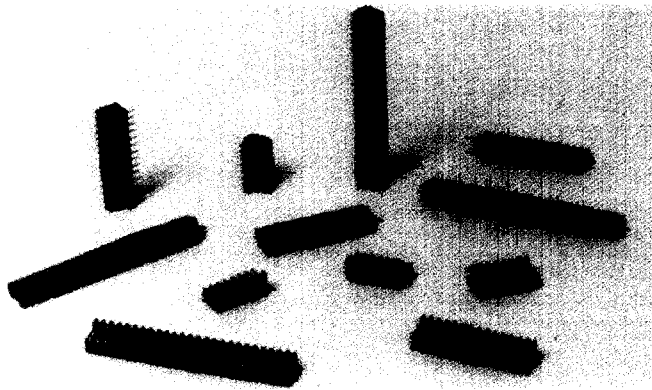


# .100" (2.54 mm) Dip Solder Connector



## PART NUMBER CODING

**100X - 2XX - 2XXX**

- CONTACT TAIL  
05= D. DIM .14 (3.56)
- CONTACT MATERIAL  
1 = BRASS  
0 = PHOSPHOR BRONZE
- NO. OF POSITIONS
- INSULATOR STYLE
- PLATING CODE  
0 = TIN  
8 = .000015 SELECTIVE GOLD  
F = .000030 SELECTIVE GOLD
- CONNECTOR SERIES

ALL DIMENSIONS ARE IN INCHES  
DIMENSIONS IN ( ) ARE IN MILLIMETERS

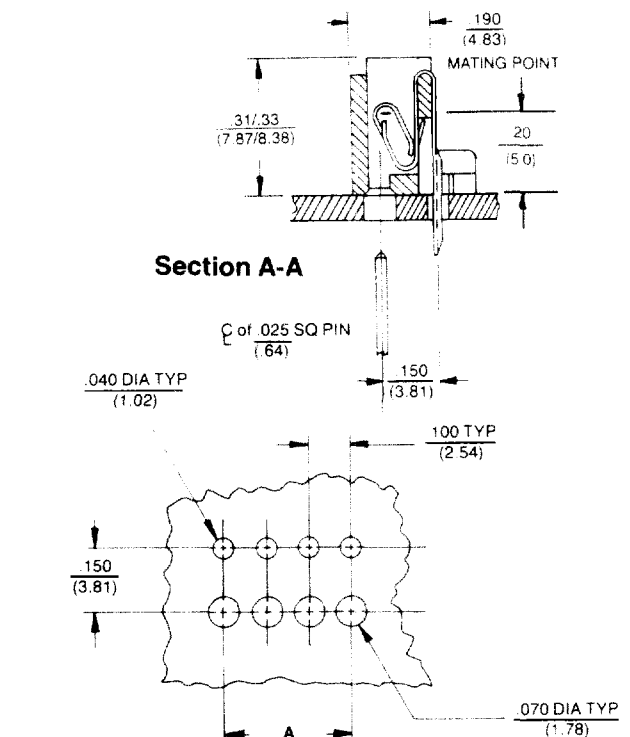
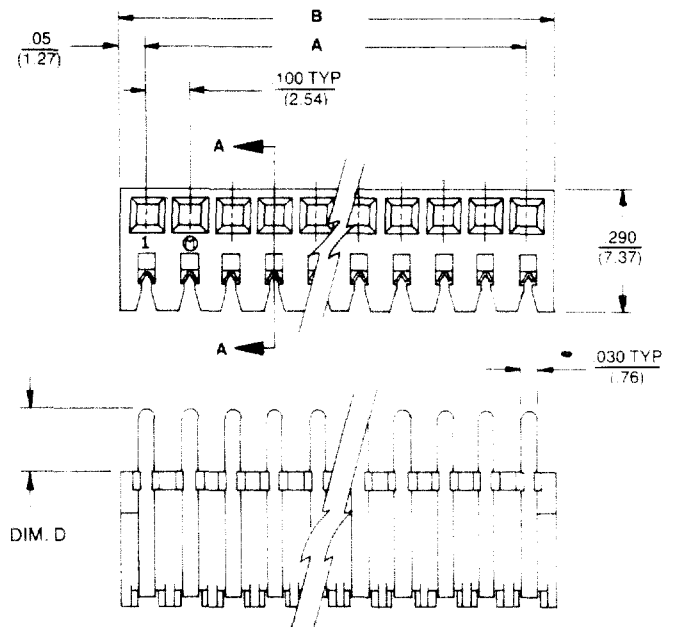
| Part Number   | No. of Pos. | Dim. A. |       | Dim. B.     |           |
|---------------|-------------|---------|-------|-------------|-----------|
|               |             | Inch    | MM    | Inch ± .010 | MM ± .254 |
| 100X-202-21XX | 2           | .100    | 2.54  | .20         | 5.08      |
| 100X-203-21XX | 3           | .200    | 5.08  | .30         | 7.62      |
| 100X-204-21XX | 4           | .300    | 7.62  | .40         | 10.16     |
| 100X-205-21XX | 5           | .400    | 10.16 | .50         | 12.70     |
| 100X-206-21XX | 6           | .500    | 12.70 | .60         | 15.24     |
| 100X-207-21XX | 7           | .600    | 15.24 | .70         | 17.78     |
| 100X-208-21XX | 8           | .700    | 17.78 | .80         | 20.32     |
| 100X-209-21XX | 9           | .800    | 20.32 | .90         | 22.86     |
| 100X-210-21XX | 10          | .900    | 22.86 | 1.00        | 25.40     |
| 100X-211-21XX | 11          | 1.000   | 25.40 | 1.10        | 27.94     |
| 100X-212-21XX | 12          | 1.100   | 27.94 | 1.20        | 30.48     |
| 100X-213-21XX | 13          | 1.200   | 30.48 | 1.30        | 33.02     |
| 100X-214-21XX | 14          | 1.300   | 33.04 | 1.40        | 35.56     |
| 100X-215-21XX | 15          | 1.400   | 35.56 | 1.50        | 38.10     |
| 100X-216-21XX | 16          | 1.500   | 38.10 | 1.60        | 40.64     |
| 100X-217-21XX | 17          | 1.600   | 40.64 | 1.70        | 43.18     |
| 100X-218-21XX | 18          | 1.700   | 43.18 | 1.80        | 45.72     |
| 100X-219-21XX | 19          | 1.800   | 45.72 | 1.90        | 48.26     |
| 100X-220-21XX | 20          | 1.900   | 48.26 | 2.00        | 50.80     |
| 100X-221-21XX | 21          | 2.000   | 50.80 | 2.10        | 53.34     |
| 100X-222-21XX | 22          | 2.100   | 53.34 | 2.20        | 55.88     |
| 100X-223-21XX | 23          | 2.200   | 55.88 | 2.30        | 58.42     |
| 100X-224-21XX | 24          | 2.300   | 58.42 | 2.40        | 60.96     |
| 100X-225-21XX | 25          | 2.400   | 60.96 | 2.50        | 63.50     |
| 100X-226-21XX | 26          | 2.500   | 63.50 | 2.60        | 66.04     |
| 100X-227-21XX | 27          | 2.600   | 66.04 | 2.70        | 68.58     |
| 100X-228-21XX | 28          | 2.700   | 68.58 | 2.80        | 71.12     |

## 1000 Series Inverse Mount

A low cost approach to packaging for light or dense packaged P.C. Board applications. Supplied with contacts preinserted. Mates with 1100 series headers or .025 sq. pins staked into P.C. boards.

**Housing Material:** Nylon 94V-0

**Contacts:** Plated brass  
Phosphor bronze available



RECOMMENDED P.C. BOARD LAYOUT